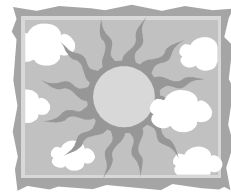


Market Harborough Church of England Primary School



Newsletter May 28th 2010

Dear Parents/Carers,

Another half term gone in the blink of an eye, and before we know it, it will be time for Sports' Days, reports, and Leavers' Celebrations.

I'd like to start this letter with a couple of important announcements. On Monday this week, we appointed a new, permanent Deputy Headteacher. Miss Joanna Lee will be joining us in September, and hopefully paying us a visit before then, from Brookside Primary School in Oadby. We are all looking forward to working with her, and I am sure she will be a great asset to the C of E team. I am sure you will join me in saying a huge thank you to Mr Lee for the great job he has done as acting deputy.

At the end of this term, however, we will be saying our goodbyes to two members of staff. First of all our congratulations go to Mr David Hill, who has been promoted to the post of Phase Leader at Thistly Meadow Primary School. And secondly, a fond farewell to a teacher who has dedicated most of her teaching career to the children of this school. Mrs Christine Screaton has decided it is time to shut down her laptop, put away her mark book and start a well-earned retirement. We will all miss her, and again, I'm sure you would want to join us in wishing her a long, happy and stress-free retirement, and to thank her for the many years she has devoted to our school.

On a more mundane note... we have been alerted by a parent to the voucher scheme Ryman's stationers are running at the moment which enables schools to benefit from money spent in the shop. We will be opening an account for the school, so if anybody uses Rymans, and would like to pass on their 'school points' we would be very grateful.

There is great activity going on behind the scenes at school at the moment, with many of our Support Staff busily preparing for the Market Harborough Carnival. I am hoping – volunteers willing – to enter a mixed infant/junior (Y2 – Y6) team in the Round Table "It's a Knockout" Competition, which takes place during the Carnival. Numbers will be very limited so we will be holding a draw of all the names put forward, soon after we get back from half term.

A quick update on the shading, in anticipation of more sun to come... although the shelters on the school field are being installed during the first week back after half term, there has been a delay on the installation of the shelter in the KS1 playground due to the fact that it is a tailor made unit. We will be looking at putting in some temporary shade until the new structure arrives.

Dates for June

Monday 7 th	School Opens
Tuesday 8 th	Y5 Visit to the National Space Centre
Wednesday 9 th	Y2 Visit to "The Gruffalo"
Friday 11 th	World Environment Day / World Cup Non-Uniform Day (proceeds to Harborough Screens project)
Monday 14 th – Friday 18 th	Art Week
Monday 21 st	Area Sports
Tuesday 22 nd	3EF Class Assembly 9.15am
Thursday 24 th	Y6 Visit to Black Country Museum
Saturday 26 th	Summer Fete 1.30 – 4pm

See over for Attendance & Reminders >>>>>>

Attendance

Week beginning 17th May 2010
Best class attendance ~ 2VH – 100%
Whole school attendance ~ 93.1%

Reminders

Please could I remind everyone that there are very strict guidelines and procedures in place for the administration of medicines at school. In the interests of everyone's safety, especially bearing in mind that we have children as young as 4 in school, it is essential that we are told about any medication your child needs to be given during the school day, that a consent form is completed, and that the medicines are given in to the office by an adult. Children **must not** carry prescribed medicines with them.

Wishing you all a relaxing and hopefully summery holiday... school re-opens on Monday 7th June.

Sue Bovill